

DRILLING AND INSERTION MACHINE FOR HINGES AND BASEPLATES

Insert C



Available models: TOMIC110 110v/ 1 ph
TOMIC216 220v/ 1 ph
TOMIC236 220v/ 3 ph
TOMIC436 440v/ 3 ph

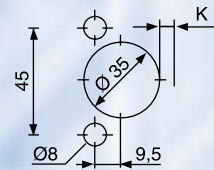
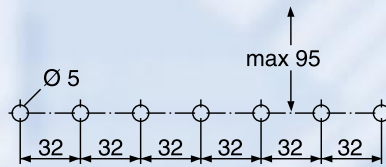
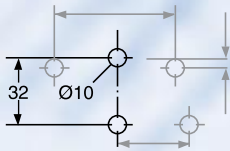
macchine e
sistemi



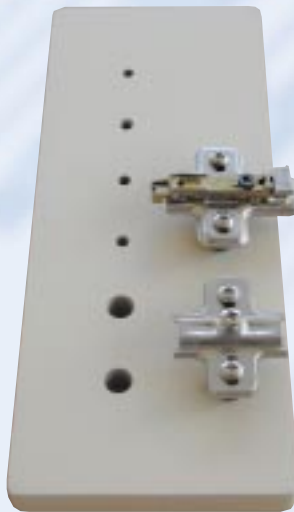
The OMAL - INSERT C machine can be used for multiple drilling solution:

- Hinge insertion
- Line drilling (base plates, shelf supports)
- Horizontal drilling (in line plates, K.D. fittings)

Feel free to contact our dealers for assembly instructions and set up.



HORIZONTAL DRILLING



LINE DRILLING



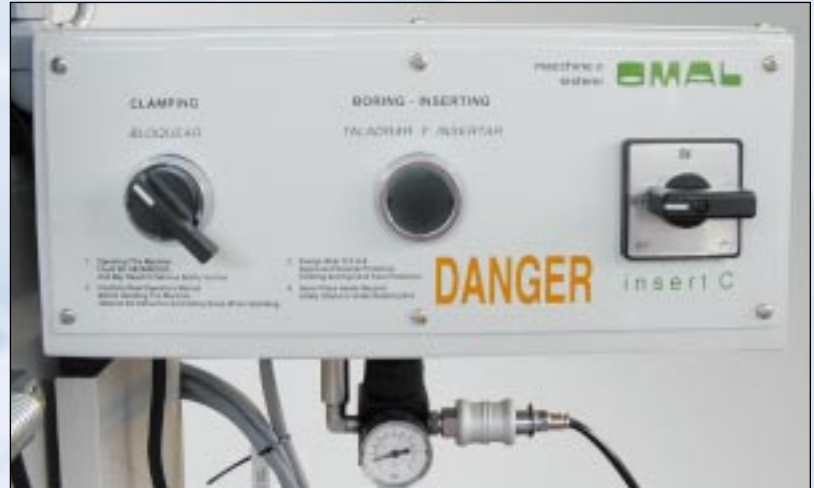
HINGE DRILLING

The OMAL drilling and insertion machine is designed to drill and PNEUMATICALLY insert SALICE hinges or other hardware thus eliminating operator fatigue.

TASK: Reliable drilling and complete insertion of the hardware

SAFETY: A special electronic device activates the motor ONLY during drilling operations, the motor stops during the insertion phase.

The machine is designed to conform with the latest safety guidelines.



STANDARD EQUIPMENT:

- 1,5 HP motor
- 5 spindles gearbox (boring pattern 45x9,5, if not otherwise specified)
- Center fence
- Table (700 mm x 400 mm)
- Right hand and left hand extension rulers (700 mm / 2'4" each)
- 4 tilt stops (to index panels on the fence)
- Pneumatic (6 bar, 85 psi) hold down clamps
- Universal insertion RAM
- Set of drill bits - 1 x 35 mm RH bit + 2 x 8mm LH bits
- Tool kit
- Operators manual
- Total weight: 65kg / 150lbs

Optionals:

- 7 spindles line drilling head
ITEM#TODRHD7
- Dust-collecting exhaust device
ITEM#TOMEXDEV

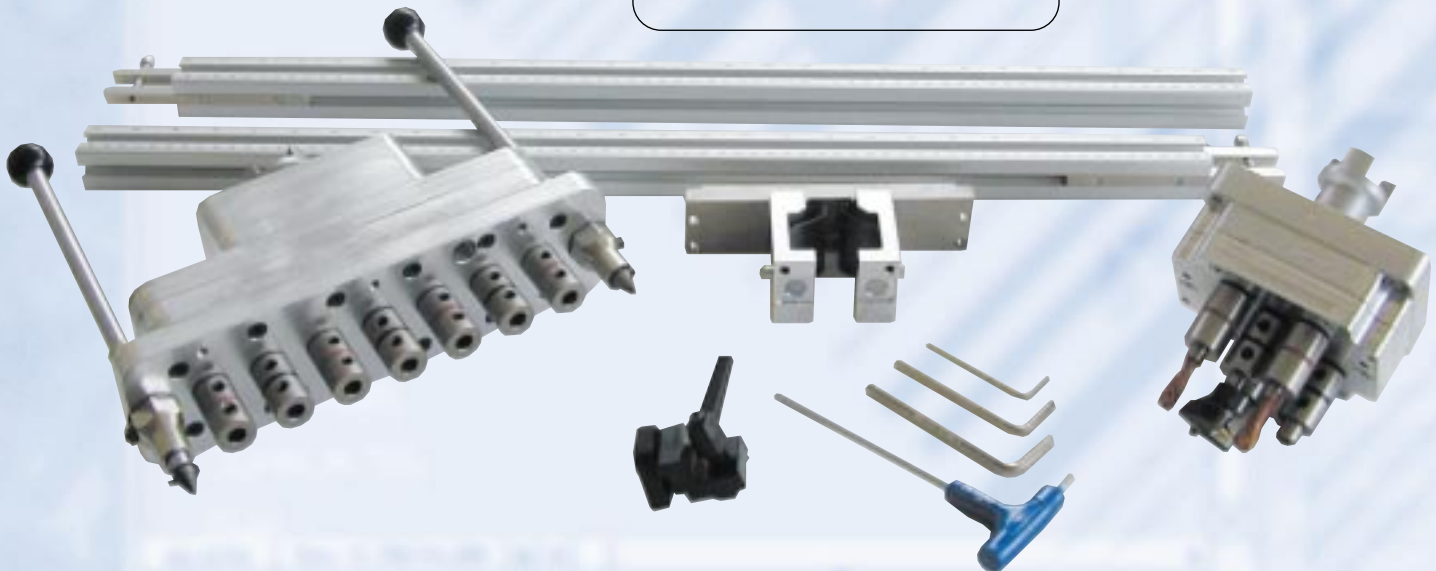


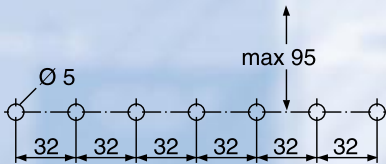
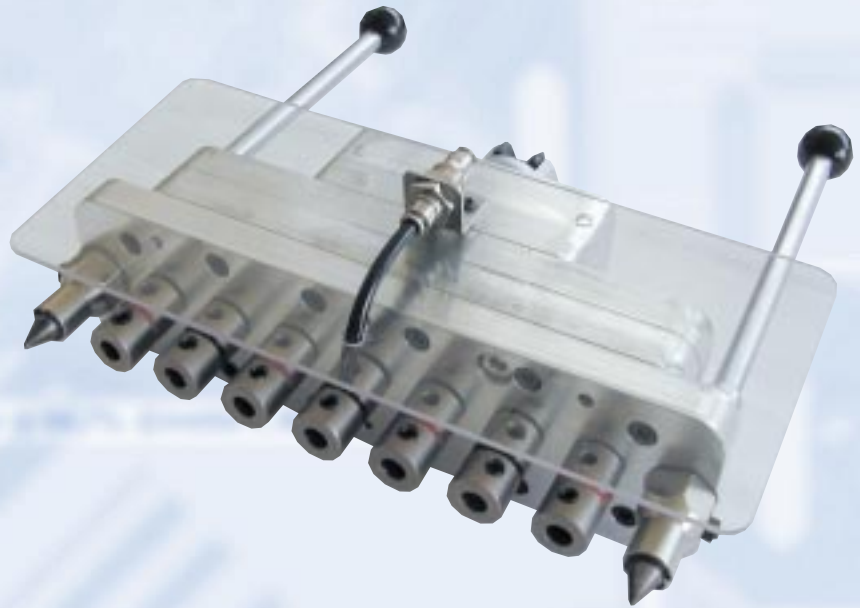
CONTROL PANEL



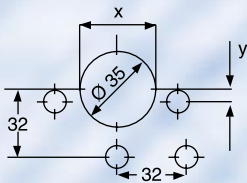
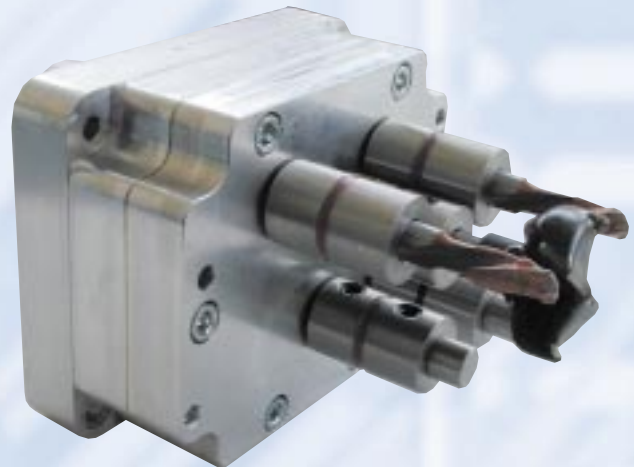
7 SPINDLES LINE DRILLING HEAD
DEPTH DRILLING DISTANCE

ACCESSORIES





7 SPINDLES LINE DRILLING HEAD



5 SPINDLE GEARBOX

TECHNICAL DATA:

- Interchangeable 5 spindle gearbox
- Motor 1,1 KW - 1,5 hp - 60 Hz
- Voltage 110 / 1 ph
- 220 / 1 ph
- 220 / 3 ph
- 440 / 3 ph
- Shank diameter Ø 10 mm
- Required air-pressure 6 bar / 85 Psi
- Table size 700 mm x 400 mm
- Weight 65 kg / 150 lbs

DEALER NAME