

DRILLING AND INSERTION MACHINE FOR HINGES

The OMAL INSERT C - MANUAL drilling and insertion machine is designed to drill and insert SALICE hinges.

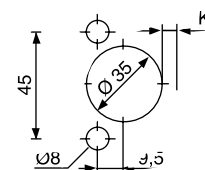
The operation is manually performed by the operator acting on a well balanced drill/insert lever designed to reduce fatigue.

TASK: Reliable drilling and complete insertion of the hardware.

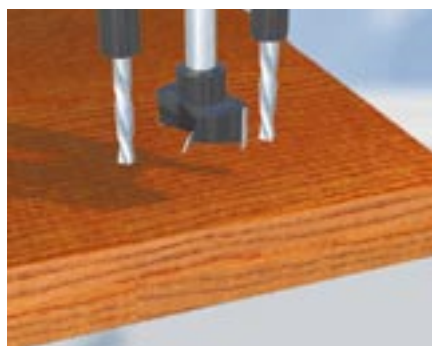
SAFETY: A special electronic device activates the motor ONLY during drilling operations, the motor stops during the insertion phase.

After the operation, the gearbox returns to a safe neutral position due to the action of an AUTOMATIC RETURN DEVICE.

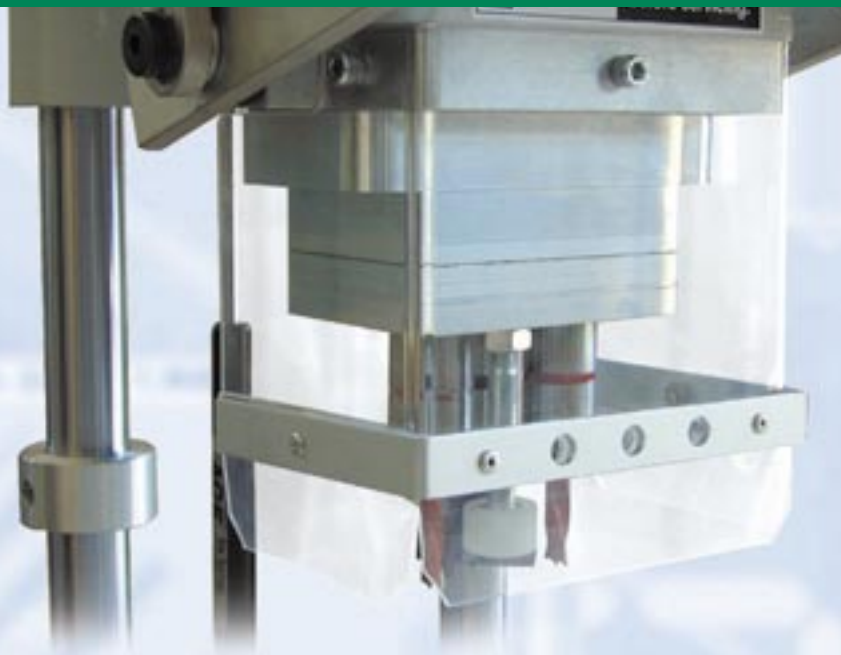
The machine is designed to conform with the latest safety guidelines.



macchine e sistemi **OMAL**



Insert C manual



STANDARD EQUIPMENT:

- 1,5 HP motor
- 3 spindles gearbox (boring pattern 45x9,5)
- Center fence
- Table (700 mm x 400 mm)
- 2 tilt stops (to index panels on the fence)
- Insertion RAM
- Set of drill bits - 1 x 35 mm RH bit + 2 x 8mm LH bits
- Tool kit
- Operators manual
- Total weight: 35kg / 77lbs

Optionals:

- Insertion RAM for 165° opening hinges.

TECHNICAL DATA:

- Interchangeable 3 spindle gearbox
- Motor 1,1 KW - 1,5 hp - 60 Hz
- Voltage 110 / 1 ph
- Shank diameter Ø 10 mm
- Table size 700 mm x 400 mm
- Weight 35 kg / 77 lbs



HINGE DRILLING

DEALER NAME